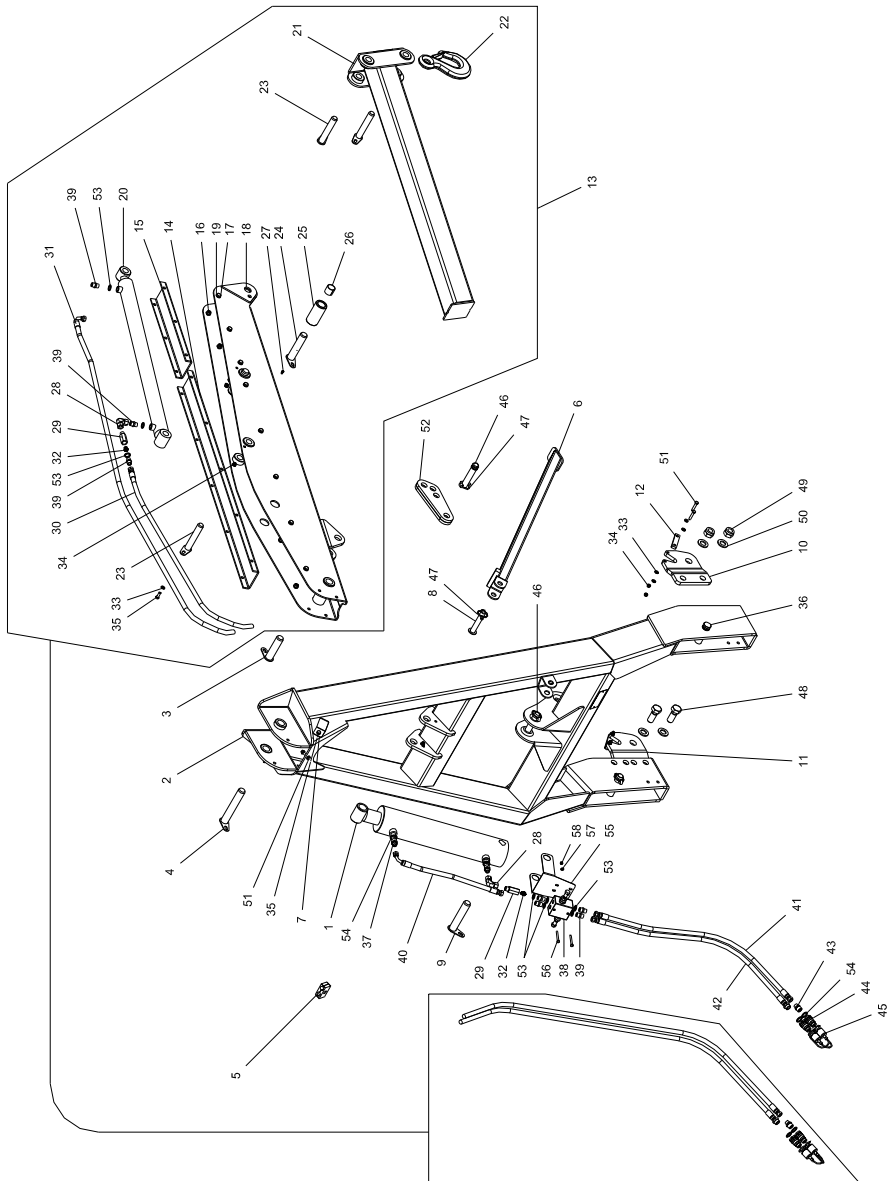

Pos. No.	Order no.	Notes
1	5693-15	Lifting cylinder
2	5693-01	Extension cylinder
3	9983-25	Hose 3000 mm 3/8" x 3/8"
4	9983-26	Hose 3950 mm 3/8" x 1/2"
5	9995-01	1/2"-3/8"
6	9995-05	3/8 angle w. connection
7	9982-10	Chock valve
8	9995-02	3/8 nipple
9	9983-23	Hose 520 mm 3/8" x 3/8"
10	9983-22	Hose 1200 mm 3/8" x 3/8"
11	9983-24	Hose 1200 mm 3/8" x 1/2"
12	9995-03	1/2" - 3/8" nipple w. 1,5 mm nozzle
13	9983-09	Quick coupling male
14	9982-11	3/8" housing f. anti drop valve
15	9990-19	Dust cap for 1/2" coupling male
16	9982-12	3/8" anti drop valve
17	9936-82	Bonded seal 3/8"
18	9936-80	Bonded seal 1/2"

SPARE PARTS



Pos. No.	Order no.	Notes.	Pos. No.	Order no.	Notes.
1	5692-15		47	9938-74	
2	5692-10		48		M24x65
3	5692-67		49		M24
4	5692-61		50		D25/44x3
5	5692-33		51		M8x40
6	5692-50		52	5692-85	
7	5692-56		53	9936-82	
8	5692-78		54	9936-80	
9	5692-64		55	5693-20	
10	5692-89		56		M6x60
11	5692-88		57		D6/14x1,6
12	5692-92		58		M6
13	5692-30				
14	5692-33				
15	5692-34				
16		M10			
17		M10x25			
18	5692-35				
19		D10/21x2			
20	5693-01				
21	5692-46				
22	9982-42				
23	5692-74				
24	5692-70				
25	5692-44				
26	9991-00				
27	9935-10				
28	9995-05				
29	9982-11				
30	9983-25	Lgt 3000mm			
31	9983-26	Lgt 3950mm			
32	9982-12				
33		D8/17x1,6			
34		M8			
35		M8x25			
36	6320-03				
37	9995-01				
38	9982-10				
39	9995-02				
40	9983-23	Lgt 570mm			
41	9982-22	Lgt 1200 mm			
42	9982-23	Lgt 1200 mm			
43	9995-03				
44	9983-09				
45	9990-19				
46	6320-04				